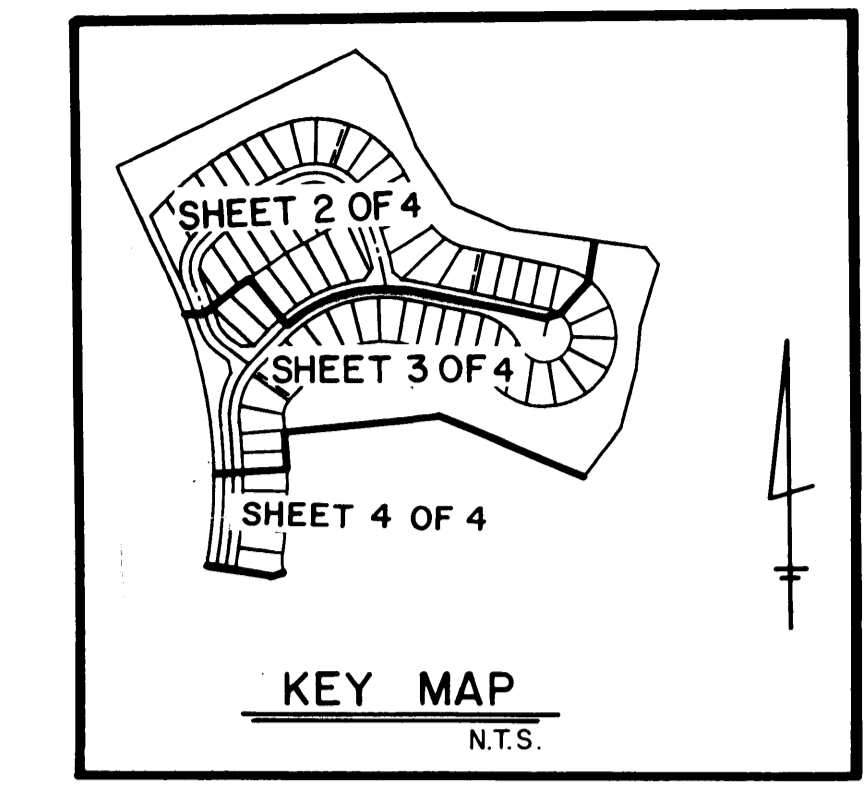


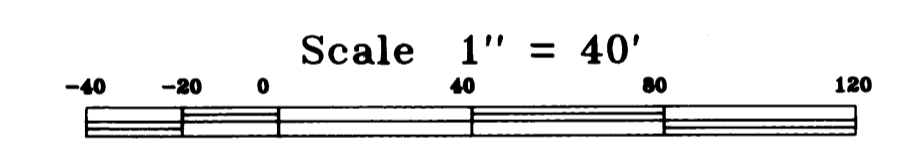
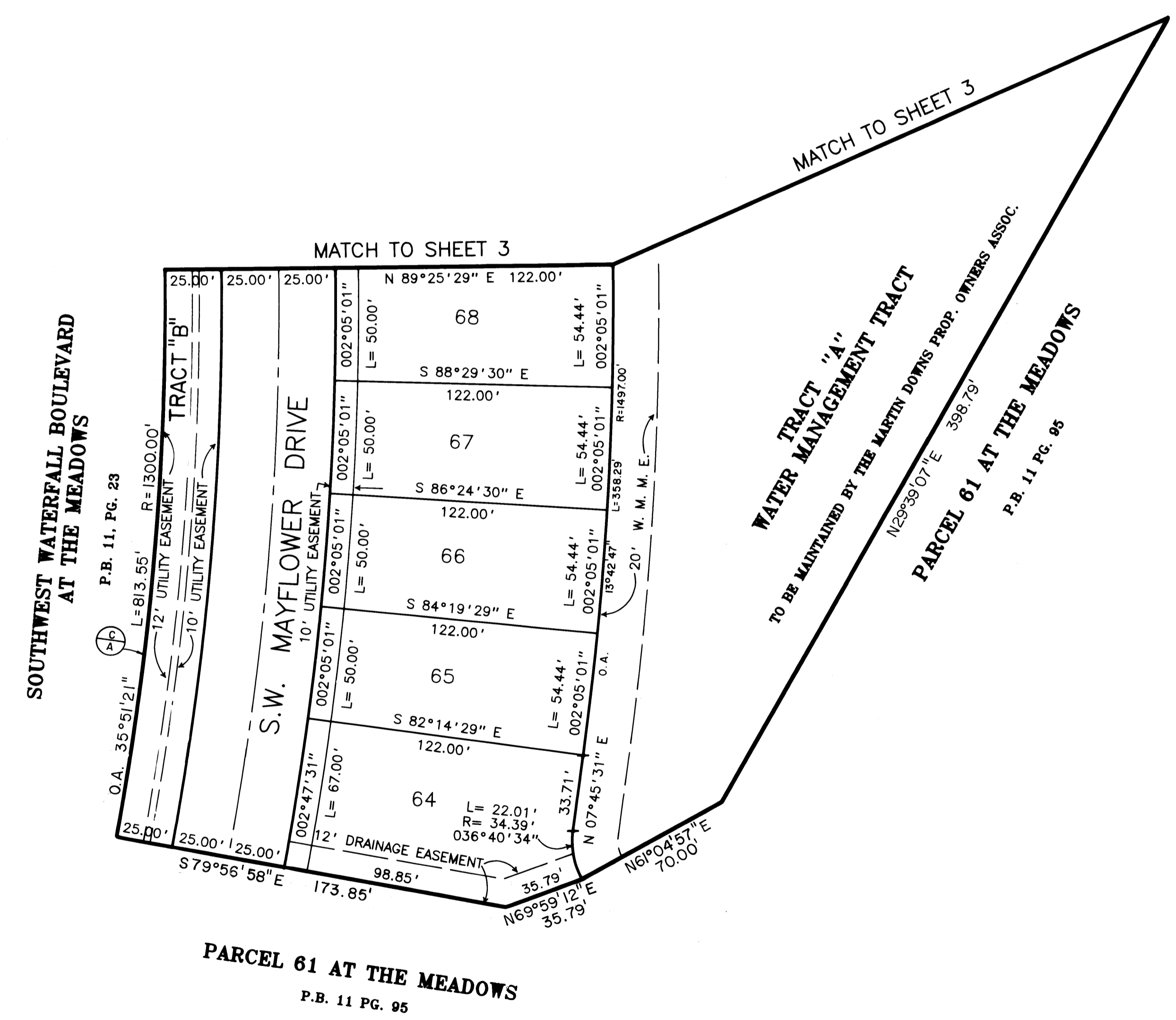
A PLAT OF

# PARCEL 61-A AT THE MEADOWS

BEING PLAT NO. 59 OF MARTIN DOWNS A P.U.D. ALSO  
BEING A REPLAT OF A PORTION OF PARCEL 61 AT THE MEADOWS  
BEING PLAT NO. 49 OF MARTIN DOWNS A P.U.D. AS RECORDED  
IN P.B. II, PG. 95 PUBLIC RECORD OF MARTIN COUNTY, LYING  
IN SECTION 12, TOWNSHIP 38 SOUTH, RANGE 40 EAST, MARTIN COUNTY, FLORIDA  
SHEET 4 OF 4 1990.



I, MARSHA STILLER, CLERK OF THE CIRCUIT COURT OF MARTIN COUNTY, FLORIDA, HEREBY CERTIFY THAT THIS PLAT WAS FILED FOR RECORD IN PLAT BOOK 12, PAGE 57, MARTIN COUNTY, FLORIDA, PUBLIC RECORDS, THIS \_\_\_\_ DAY OF \_\_\_\_\_, A.D. 19\_\_\_\_.  
MARSHA STILLER, CLERK OF CIRCUIT COURT MARTIN COUNTY, FLORIDA  
BY: \_\_\_\_\_ DEPUTY CLERK  
FILE NO. \_\_\_\_\_



PARCEL 61 AT THE MEADOWS  
P.B. 11 PG. 95

	Landmark Surveying & Mapping Inc.
	1850 FOREST HILL BOULEVARD PH. (407)433-5405 SUITE 100 W.P.B. FLORIDA
	<b>PARCEL 61-A AT THE MEADOWS</b>